

## FINANCE COMMITTEE

Slate of Officers for the first Committee of Stewards formed on April 4, 1954 were Mioko Arai, Arnold Arai, Mas Endo, Isao Furukawa, Eileen Furusho, Kaz Ito, Jack Kagetsu, Tak Kobayashi, Sherry Kitagawa, Mary Sora, Shigeki Sora, Chiz Takata, Mitsuaki Tanaka, Sakae Tanouye and Sam Watanabe.

From 1954 - 1967 - known as Committee of Stewards

From 1968 to present - operating as Finance Committee

Change was made when the Session and Stewards were combined to form the Official Board.

### Treasurers

Members who have faithfully served as Treasurer are:

Mas Endo	3 years	Roy Fukuzawa	2 years
Rozie Ogaki	12 years	Kaz Ito	8 years

Members who have served on Committee of Stewards and/or Finance Committee during 1954-79:

Over 10 years' service      Mas Endo, Kaz Ito, Ben Kunihiro, Rozie Ogaki,  
Yosh Uyeda

Over 5 years' service      Betty Asano, Norman Hayashi, Amy Kunihiro,  
Ted Nakamichi, Mits Tanaka, Sam Watanabe

### Budget

1955 - \$ 1,775	1964 - \$ 13,000	1973 - \$ 18,300
1956 - 2,140	1965 - 13,000	1974 - 19,900
1957 - 2,750	1966 - 15,000	1975 - 23,300
1958 - 4,000	1967 - 12,000	1976 - 32,100
1959 - 5,250	1968 - 14,600	1977 - 35,500
1960 - 8,625	1969 - 14,800	1978 - 40,000
1961 - 9,300	1970 - 15,800	1979 - 46,000
1962 - 10,300	1971 - 16,800	
1963 - 11,000	1972 - 16,800	

### Major Fund Drives Undertaken with The Aid of The Issei Congregation

1958	Upper Chapel	\$ 32,500
1962	Manse and Church Extension	2,500
1973	Camp Fund	38,400
1975-78	Building and Renovation	55,600

### Duties

- Offerings are recorded and donations acknowledged weekly
- Monthly financial reports are prepared before every Board meeting
- Progress report on members' offerings is sent at end of 3rd quarter
- Arrange for distribution and collection of Advent and Self Denial Folders
- Prepare and issue income tax receipts annually
- Prepare the financial budget
- Group visitation - arrange a list of members and adherents to be invited by each Board member

Ben Kunihiro



## SUNDAY SCHOOL

Ever since the inception of our church, the Sunday School has played an important role in developing the minds of young Christians. The history of Sunday School goes back to England a couple hundred years ago. At the time, young children in the lower socio-economic classes were forced to work in mines and on farms starting at a very early age. They worked 10 to 12 hours, six days a week, so that there was no time for them to obtain a formal education. Robert Raikes established the first Sunday School to be a school on Sunday; that is, academic along with religious instruction were combined into one day, which made up many children's only form of education.

Today, however, there is a public system of education, so that now, the Sunday School can use its time for Christian teachings. During the past years, attendance has declined in most Sunday Schools. Perhaps the teachings were not made relevant to the students. Our Sunday School is different. It has grown in the past decade and continues to be large. A lot of the credit must go to the teachers, as they are the ones with the contact with the students.

Our own history of the Sunday School goes back to 1954, when the need for some program for children became apparent. A Junior Congregation and Home Department was formed by Kimi Takahashi, Mary Inouye, and Hide Shimizu. In 1956-57, Akemi Horiuchi took charge with six volunteers to look after about 20 children. It was not until April 1958, that the first real Sunday School was formed with Toyo Taira as its first Superintendent. In 1960, there were 38 students and five teachers, but by 1970, there were 112 students and 21 teachers. Presently, there are 150 students and 37 teachers.

Around 1970, the Sanseis started to teach, and at the present time, half of the teachers are Sanseis.

The Sunday School has problems which must be faced right now. Is the curriculum adequate and meeting the needs of its students? What can be done with the Senior Department to help older teenagers remain instead of dropping out? Should there be increased involvement from the members of the Issei Church? These will have to be answered in the near future.

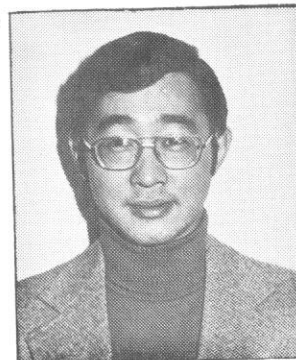
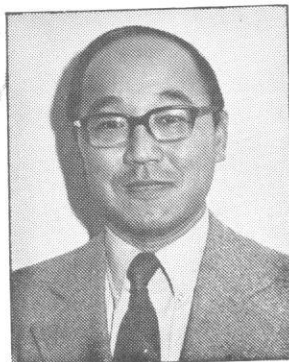
The continuing support of the Issei and Nisei Churches is much appreciated, and without the backing of the congregations, we could not carry out our aim of providing Christian teaching.

Brian Kai

We pay tribute to the following Sunday School staff for their dedication.

SUNDAY SCHOOL SUPERINTENDENTS

1. Toyo Taira  
Superintendent in 1958-60; Secretary in 1961.  
Teaching from 1962 to present, almost every Sunday without a break - 21 years of dedication to the Sunday School.
2. Yuki Matsui  
Superintendent in 1961-64; teaching 1966-68.
3. Roy Fukuzawa  
Superintendent 1964-66.  
Teaching from 1968 to present.
4. Kaz Shikaze  
Superintendent from 1966-76.  
Teaching from 1966 to present.
5. Brian Kai  
Superintendent from September 1976 to present. First Sansei Superintendent.  
Teaching from 1973 to present.



Staff with 5-10 years service or more (as teachers, assistants, secretary-treasurer)

Audrey Fukuzawa  
Amy Kunihiro  
Jean Nagata  
Eiko Watanabe

Clara Kai  
Noby Matsugu  
Ruby Shikaze

Irene Kagawa  
Beth Matsugu  
Nancy Sora

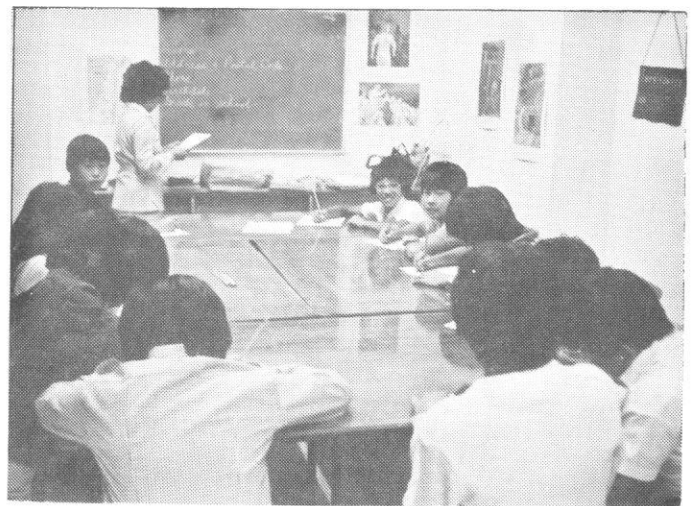
Sansei teachers and assistants with several years of service

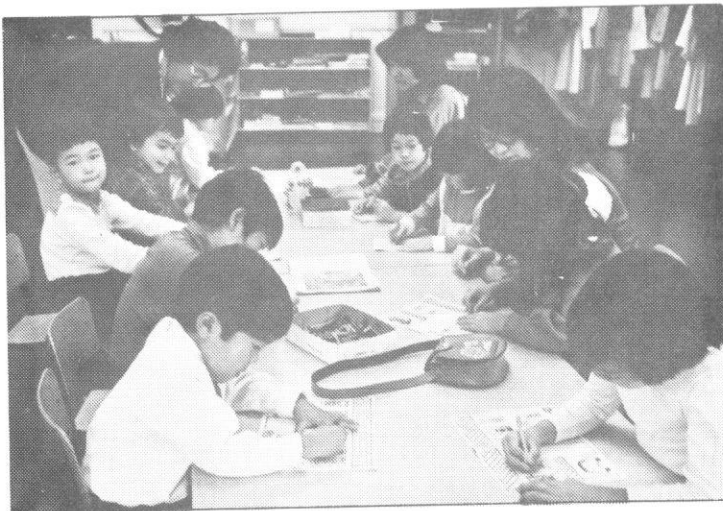
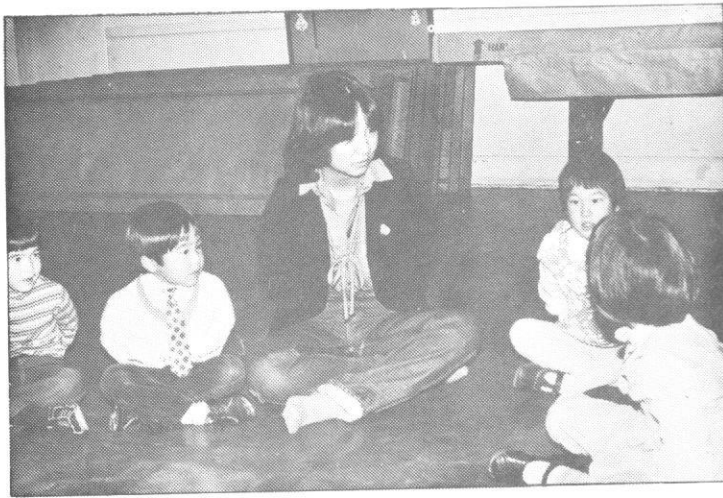
Lorinne Chong  
Kathy Fujioka  
Mike Koyanagi  
Linda Tanouye

Frances Endo  
David Kai  
Donna Murai

Diane Fujioka  
Kim Uyede-Kai  
Glenn Tanouye









## CHURCH BAZAAR

From time immemorial, the Bazaar has fascinated and attracted people to the marketplace by presenting many exotic items at prices that no one can afford not to buy - an opportunity to meet old friends and renew memories over a bowl of udon and hot green tea or other epicurean Japanese dishes.

Our first Bazaar was held in 1957 at the Church of All Nations on Queen Street and has been an annual affair held on the second or third Saturday in October. With the advance in age, the Isseis turned over the responsibility to the Niseis in 1967 with Keigi Saisho as its first chairman and continuing until 1975, followed by Mits Tanaka in 1976, and Rozie Ogaki in 1977 and 1978.

The most demanding job of the Bazaar Committee is the position of Treasurer. It takes a month or more after the Bazaar before results can be tabulated. Roy Fukuzawa, Rozie Ogaki and Sam Watanabe were the early Treasurers who assisted the Isseis, and then Rozie Ogaki and Mas Endo volunteered their skills when the Niseis took charge.

The preparation for this big event starts in June when the executive of each church organization meet to discuss the program. Almost every church member is given a job and even the friends of the church have been pressed into service which makes this occasion a one big family affair.

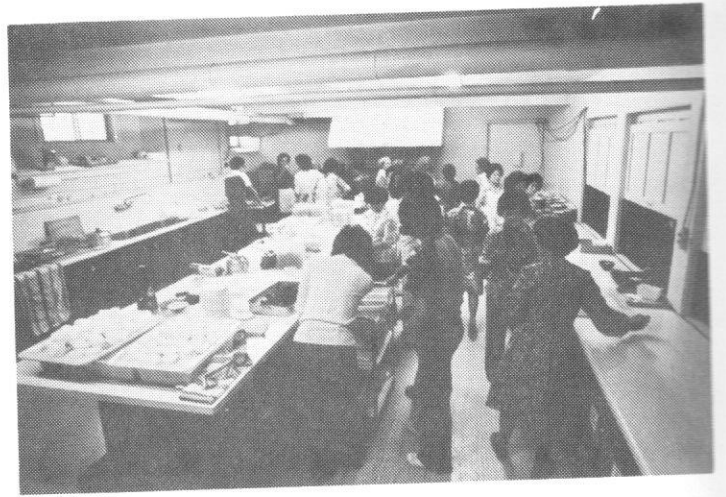
Our records show that people like to buy our delicious sushi, and eat in our dining room. Income from these departments always tops the list each year which reflects that our ladies, young and old, are still the best chefs in our community.

It is very gratifying to see so many Sanseis helping now, especially on Friday night to set up the booths and also to take complete charge of some departments such as the dining room and gymnasium, and, of course, clean up after the Bazaar.

Some of the highlights are food sales, mochi-tsuki, dining room, white elephant, bake sale, Regal cards, handicrafts, flowers, etc., and some of the benefits derived are to help our finances, get to know each other, and offer an opportunity for friends to visit our church.

The popularity of our Bazaar was very noticeable last year when a crowd five deep lined up at the side entrance and up Dovercourt Road for the 1:00 p.m. opening.

Keigi Saisho







## SATSUKI MATSURI

Satsuki Matsuri, "Festival of the Fifth Moon" was first held on May 13, 1961 and was named by Mrs. Endo, wife of Rev. Isamu Endo, a student at Emmanuel College.

The concert was organized by the Program Committee for the pleasure of the Issei. It was a success financially netting about \$560 each for 13 concerts. It was begun in simple fashion, with no printed programs and admission by collection. With improvements made each year, a bilingual program was produced in 1963 with paid advertisements. A Sunday School contest for a cover design was won by Jeffrey Nagata - 11 year old, and Darryl Hayashi - 12 year old. Later designs used were created by Lorinne Chong (bird) and Terry Adachi (bamboo). In 1973 there were 84 bilingual advertisements. Contributing greatly to this project were Naomi Chiba, George Sato, Toshie Takahashi, Mitsuaki Tanaka and Dorothy Yamamoto.

The early programs consisted mostly of solo and group performances in music and dance, skits, movies of Japan. In 1969, a shibai was presented under the direction of Kiso Sora - "Miracle", a three act play. In 1970, "Father Comes Home"; 1973, "Prodigal Son Returns"; 1975, "Eldest Daughter"; and 1976 "Genbaku no Haha" (Scar faced Mother) which was the 16th and last concert. The following participated in two or more shibais - Mas Endo, Penny Ioi, Frank Nakamura, Mary Murai, Keigi Saisho, Kiso Sora and Aiko Tsuji.

For ten years, these annual concerts were presented on a Saturday evening, but for the convenience of the aging Issei, it was moved to Sunday afternoons, following lunch prepared by the ladies of the church. As community activities began to increase, and Mother's Day weekend became hard pressed for time, Satsuki Matsuri was discontinued.

However, there remain vivid recollections of the happy fellowship of participants and audience in sharing the slapstick humour, ingenious props and funny experiences of mutual interest. Satsuki Matsuri did make a priceless contribution to the well being of the whole church. Our tribute is paid to the memory of Naomi Chiba who contributed so generously of her time and talent to this project.

Saburo Takahashi

TORONTO  
JAPANESE UNITED CHURCH  
May 16th, 1976











## CHURCH PICNIC

The Annual Church Picnic has been a particularly pleasant social event eagerly looked forward by both young and old over the years.

From the records, it appears that the first of these outings took place in 1957 at High Park, although not many of our congregation can recall the event very clearly. Since then, there has been an annual day set aside when the ministers along with all the Sunday School students and their parents journeyed out to various picnic grounds such as Greenwood Conservation Park, Boyd Conservation Park, Sibbald Provincial Park, Swiss Chalet Park, Cedar Glen, Glenbrook Day Camp and finally in 1973, our own Camp Koyu on Lake Scugog.

There were outdoor services with the Nisei and Issei ministers participating, at times under somewhat unusual conditions. Typhoon strong winds and monsoon like rains have failed to deter our faithful at these worship services.

Some of the facilities were not quite up to expectations at some of the sites; however, without a grumble, the ladies patiently took the comfort station relays to more accustomed installations.

The highlight of each picnic has been the races for young and old alike. With the prizes for the races looked after by the faithful husband and wife team of Rozie and Judy Ogaki, each year the races brought out a steadily changing group of faces. The eager-faced youngsters of a few years back are soon back with another generation of racers vying for the prizes so eagerly sought.

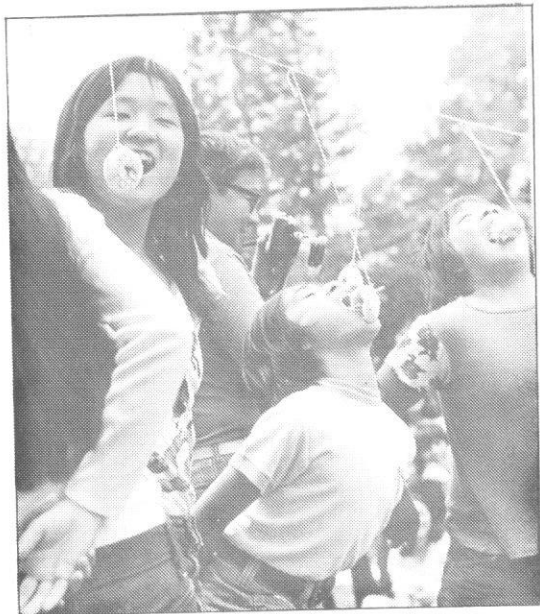
During the early years, transportation was provided by chartered buses, but with the increased number of private motor cars in recent years, the need for the bus was not necessary. With the establishing of the church camp, the early small gatherings have now grown to number some 700 people in attendance.

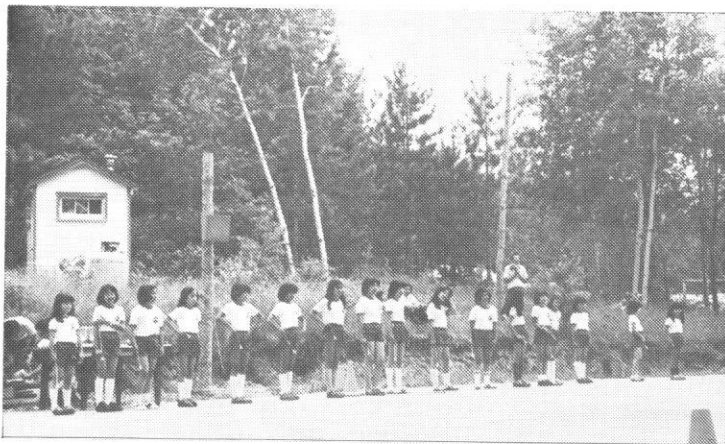
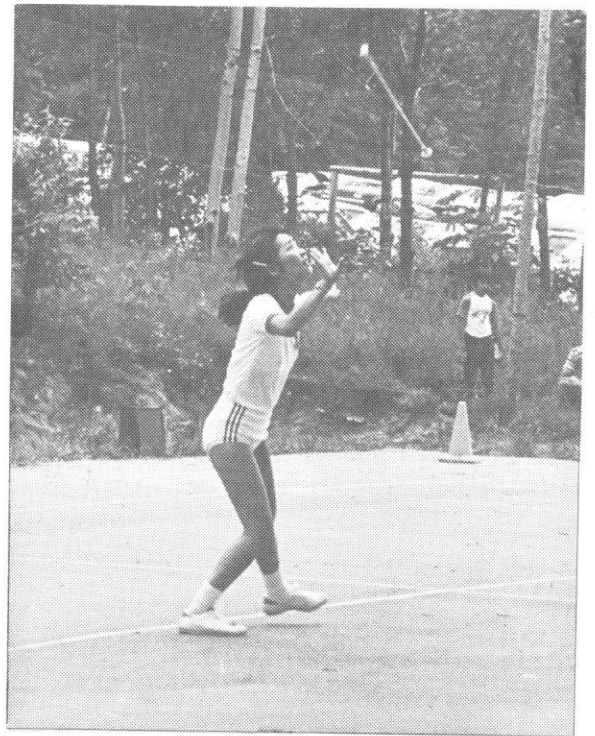
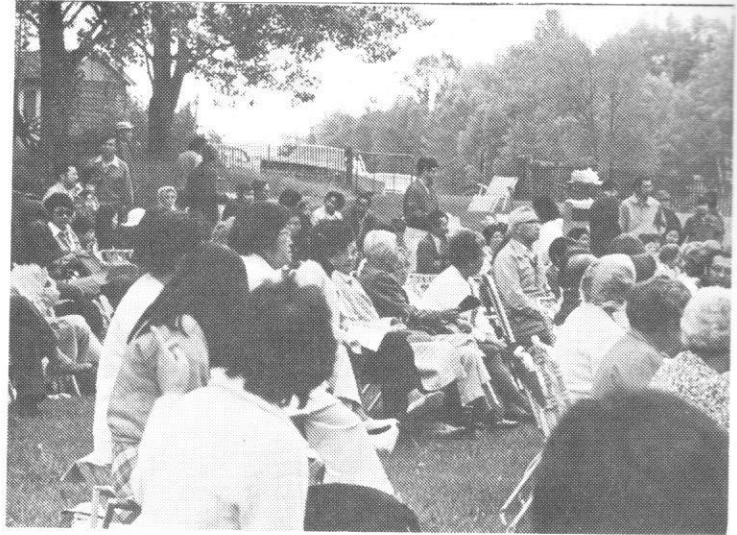
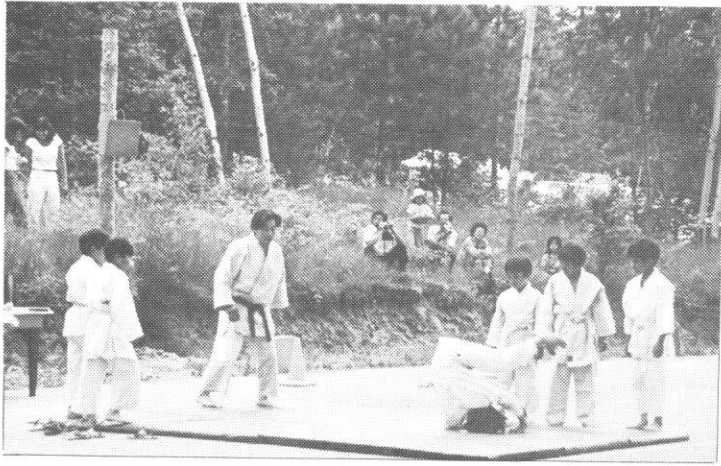
Regardless of the size, each picnic signified the end of another term of Sunday School as old friends sought each other out for a few moments of conversation in the fellowship of nature.

Min Ota

*Min Ota passed away March 14, 1979. We pay tribute to Min who served on the Official Board, most recently on the Program Committee.*









## CHURCH MUSIC

During the past 25 years, many people participated in developing the choir or playing the piano/organ.

From 1954-57 at Queen Street United Church, pianists for the Nisei services in the Sunday School room were Kazuko Ito and Fumi Kono, followed by Mary Nishikawara (Stenzel). The Nisei Choir of about 30 members was formed during this period under the leadership of Tats Sanmiya, followed by Howard Campbell and Geraldine Hunt.

From 1958-68 after moving to our present location at Centennial United Church, organists and choir leaders were Roman Toi, Richard Phillips and Peggy Gordon, Florence Bowker and Amy Uchida. Rev. Wm. Morris and Makito Norisue assisted with the Junior Choir.

From 1968 to present, organ music for services have been supplied by the following Sanseis (chronological order): Valerie Asano, Elizabeth Kobayashi, Nan Sasaki, Brian Kai, Michael Koyanagi, David Kai, Kathy Uyeyama, Joanne Asano, Diane Fujioka, Gary Ito, Brenda Nakata, Donna Murai, Alice Sakamoto, Brian Fukuzawa and Joy Takahashi.

### SANSEI CHOIR

In the early 1960's, an Explorer Choir was formed by Mrs. Yuki Matsui, and in 1970, a Junior Choir was organized by Brenda Uchimarui, assisted by Valerie Asano at the piano.

In 1971, the Sanseis began choir practice (Senior Choir) under the leadership of Glenn Tanouye, assisted by Brian and David Kai and Mike Koyanagi. The Senior and CGIT choirs participated in the Kiwanis Festival in 1973, 1974, 1975 and 1977 and won many awards.

In 1975, a Junior Choir was formed under Glenn Tanouye and Dick Murai with Gary Ito, as pianist.

The choirs have entertained at many functions such as the CITY-TV half-hour program on "People Who Sing Together", Christmas carol singing at the Toronto Dominion Centre, Nipponia Home, Lambert Lodge, various churches - Centennial, Gospel, St. Paul in Orillia, Westmoreland; concerts at Japanese Canadian Cultural Centre and Satsuki Matsuri.

In order to familiarize the Nisei congregation with modern hymns, at the beginning of the service, David Kai and Terry Endo have been helping out with guitars and also with the use of words on the screen.

The Church is very appreciative of the contributions made by the Sanseis to the music program. Special mention should be made to Mrs. Kazuko Ito who has played the organ for the Issei Church for many, many years.





## BIBLE STUDY

Bible Study for the Nisei Church was first conducted in 1956 by Vi Langland, a student at the United Church Training School, with some 40 members enrolled for the sessions before morning service at Queen Street United Church. The 1959-60 study was given by Ken Matsugu while a student at Emmanuel College. Our ministers subsequently carried on studies with the members at various periods during the years.

### ADULT CHRYSALIS

In the Fall of 1975, we were fortunate to have Margaret Moriyama come to our church to lead us in Adult Bible Study. We have been meeting once a month with her - sessions are briefly outlined below.

Parables of Jesus - We tried to understand the situations in which Jesus first told them, and then to discover the special teachings that Jesus wanted his listeners to learn. The final discovery was in trying to apply that message to our own lives.

The Book of Ephesians - The apostle Paul describes the Church as being like a body - with Christ as the head. He urges us to get rid of our old selves and become new persons in Jesus.

The Book of James - This book is a study of "Practical Christianity". It helps the Christian to bring together faith and works; word and practice; prayer and life. He deals with topics such as temptation, prejudice, use of the tongue, judging others, faith, patience and prayer.

Studies on the Life of Jesus Christ - Our study this year will be a study about the Person of Jesus Christ, according to the Gospel of St. Mark.

### KERYGMA

Kerygma is a Greek word that refers to the message that is proclaimed in the Bible. The Fall of 1977 heralded a new United Church course of Bible Study. The Kerygma Bible Study Project seeks to bring the message of the whole Bible using a thematic approach.

Our aim for Kerygma has not only been to learn what is in the Bible, but also to learn what purposes run through it. It was encouraging to see the keen interest of the participants in wanting to tackle such an in-depth study of the Bible. Classes are led by Rev. Ken Matsugu on Thursdays; morning sessions at the Manse and the evening meetings at the church.

We have spread this project over two years, and while we are discovering that it involves a great deal of reading and commitment, we are also finding that it is a tremendous learning experience.

Nancy Sora

## GROUPS FOR YOUNG PEOPLE

During the 25-year period from 1954-79, young peoples' groups were formed under various names and flourished for brief periods intermittently as the youth entered another age group or got married. Although some of the groups were short lived, they all served a useful purpose at that particular time.

### YOUNG ADULTS GROUP

This group was formed in 1953, one year before the Nisei Church was organized, and Tom Saito was the first President. Programs consisted of speakers, discussion groups, plays, summer outings, etc., with worship service at each meeting. There were approximately 30 members and the group phased out in 1958 when many members married.

### YOUNG PEOPLES

This group was organized in 1957 by Roy and Audrey Fukuzawa, with their first President, Frank Shimano and active members were Bob Kuba, Dorothy Shimizu and Kathy Yamamoto. Their program included folk singing, movie night, discussion groups, picnics and other social events. The club disbanded in 1964.

The above two groups were mostly Nisei members.

### JUCYP (Japanese United Church Young Peoples)

Under Vernon Shimotakahara, the first Sansei Young Peoples group was organized in 1968, with Howie Uyede as President. They participated in hayrides, film nights, sleigh rides, bowling, etc. The group disbanded in 1971.

### HI-C

In 1965, under Roy Fukuzawa and Kaz Shikaze, the teenagers began weekly tennis games and this group became the nucleus of the Hi-C. In 1966, under the leadership of Harry Matsugu and Joe Koyanagi, a club for Sansei boys and girls between 15-17 years of age was formed and their first President was Raymond Kinoshita, followed by Lottie Chiba in 1967, and Cathy Kuba in 1968-69. Their program included tennis games at High Park, picnics at Swiss Chalet Park, skating at Grenadier Pond, exchange with Hi-C groups from Westmoreland and Bloordale Church, discussion nights, sports and hiking.

As the teenagers entered higher education, many of them dropped out.