



## CENTENNIAL METHODIST CHURCH 1906

**This Neo-Gothic inspired church replaced an earlier Centennial Methodist Church built on this site in 1891. Notable design elements include decorative stone trim, three central Tudor-arch windows, and flanking square towers topped with pyramidal steeples. It was renamed Centennial United Church in 1925, after the creation of the United Church of Canada. In 1986, the Nisei congregation of the Toronto Japanese Church joined Centennial United to form Centennial Japanese Church. A residential redevelopment was completed in 2010.**

**City of Toronto Inventory of Heritage Properties**

**HERITAGE TORONTO 2011**







*On behalf of the Government of Ontario,  
I am pleased to extend warm greetings to all those  
celebrating the 60<sup>th</sup> anniversary of the founding of*

## **CENTENNIAL-JAPANESE UNITED CHURCH**

*This important event is a celebration of the strength  
of faith and the dedication of those who have worshipped  
at Centennial-Japanese United Church over the years.*

*I send my best wishes to everyone  
taking part in this celebration.*



Legislative Building, Toronto  
April 4, 2014

A handwritten signature in black ink that reads "Kathleen Wynne".

**Kathleen Wynne  
Premier**







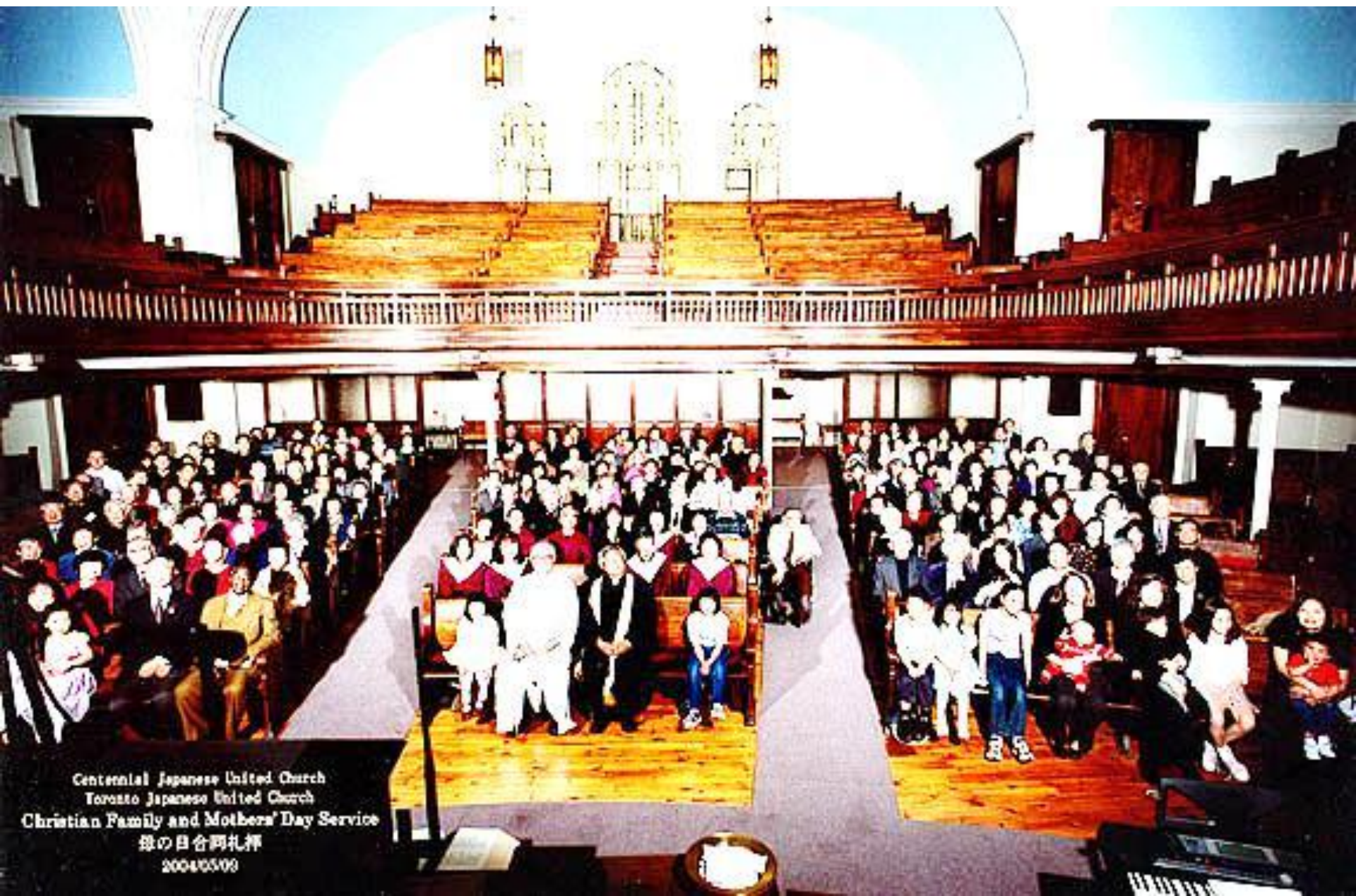












Centennial Japanese United Church  
Toronto Japanese United Church  
Christian Family and Mothers' Day Service  
母の日合同礼拝  
2004.05.09















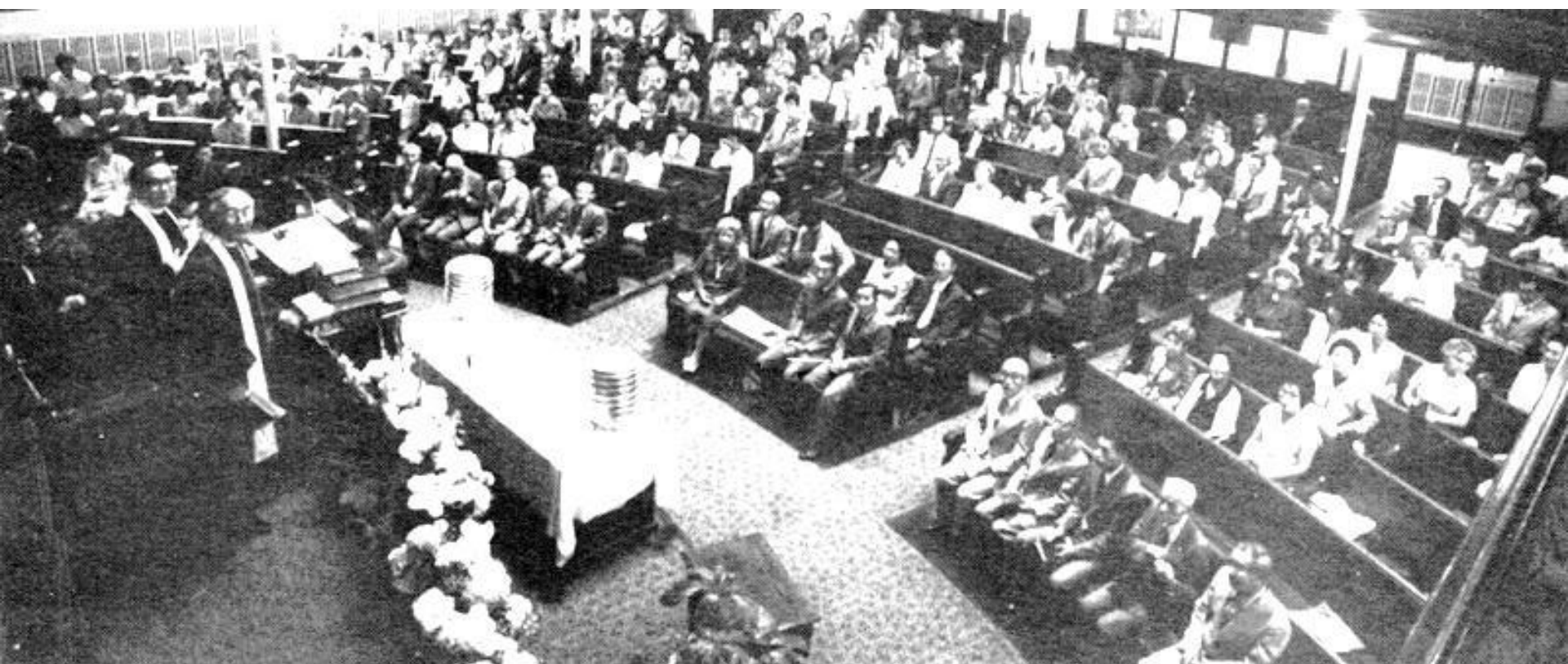


















The Rev. Ben Muratu, Susan King, the Rev. George Tomita at Susan's induction









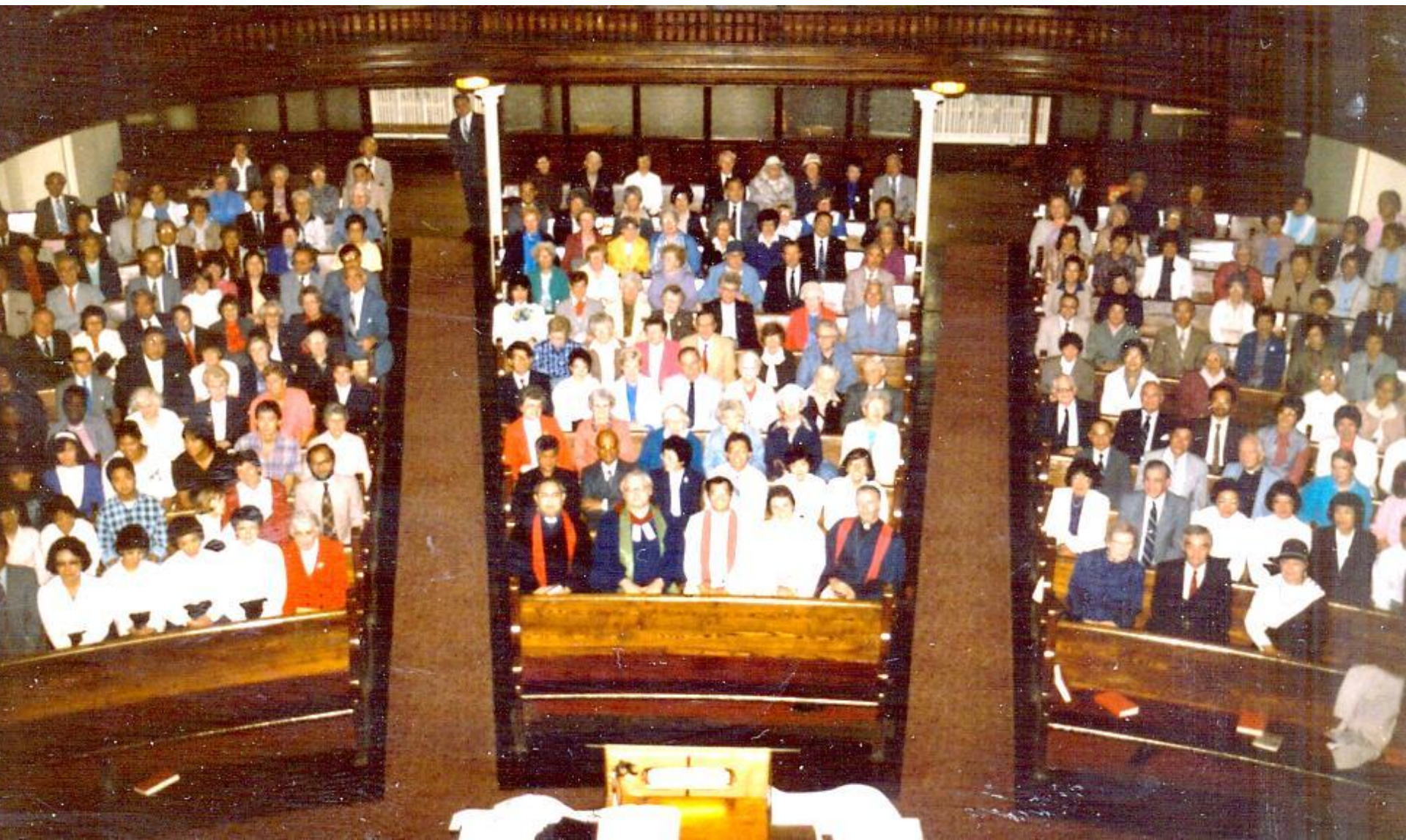












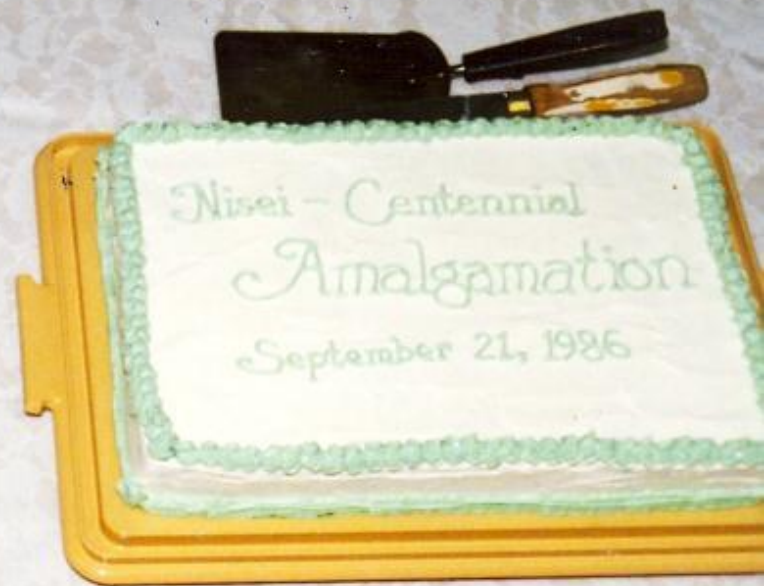
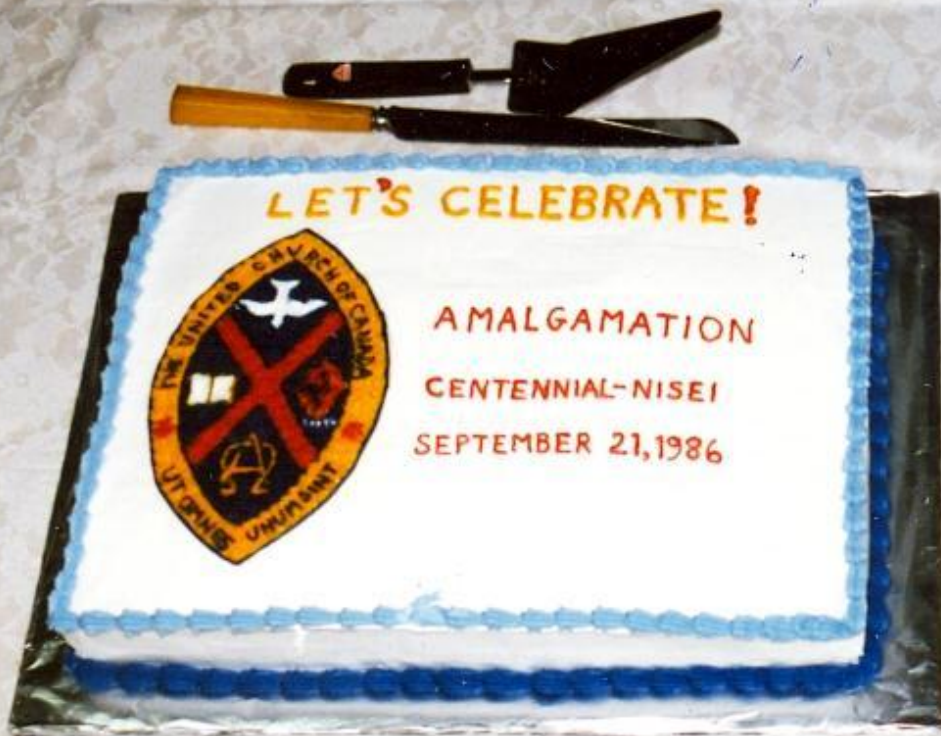












# THE TORONTO JAPANESE UNITED CHURCH

701 DOVERCOURT ROAD



## CHAPEL and EXTENSION FUND

















Betty

Su





























































































































THIS TABLET IS ERECTED IN  
HONOUR OF ALL THE CANADIAN  
SOLDIERS WHO DIED IN THE  
GREAT WAR A.D. 1914-1918



**CENTENNIAL UNITED CHURCH**

**CENTENNIAL  
JAPANESE  
UNITED CHURCH**

ENGLISH SERVICE 11:00  
SUNDAY SCHOOL 11:30  
REV. STEPHEN WILLEY

TORONTO  
JAPANESE  
**UNITED  
CHURCH**









































































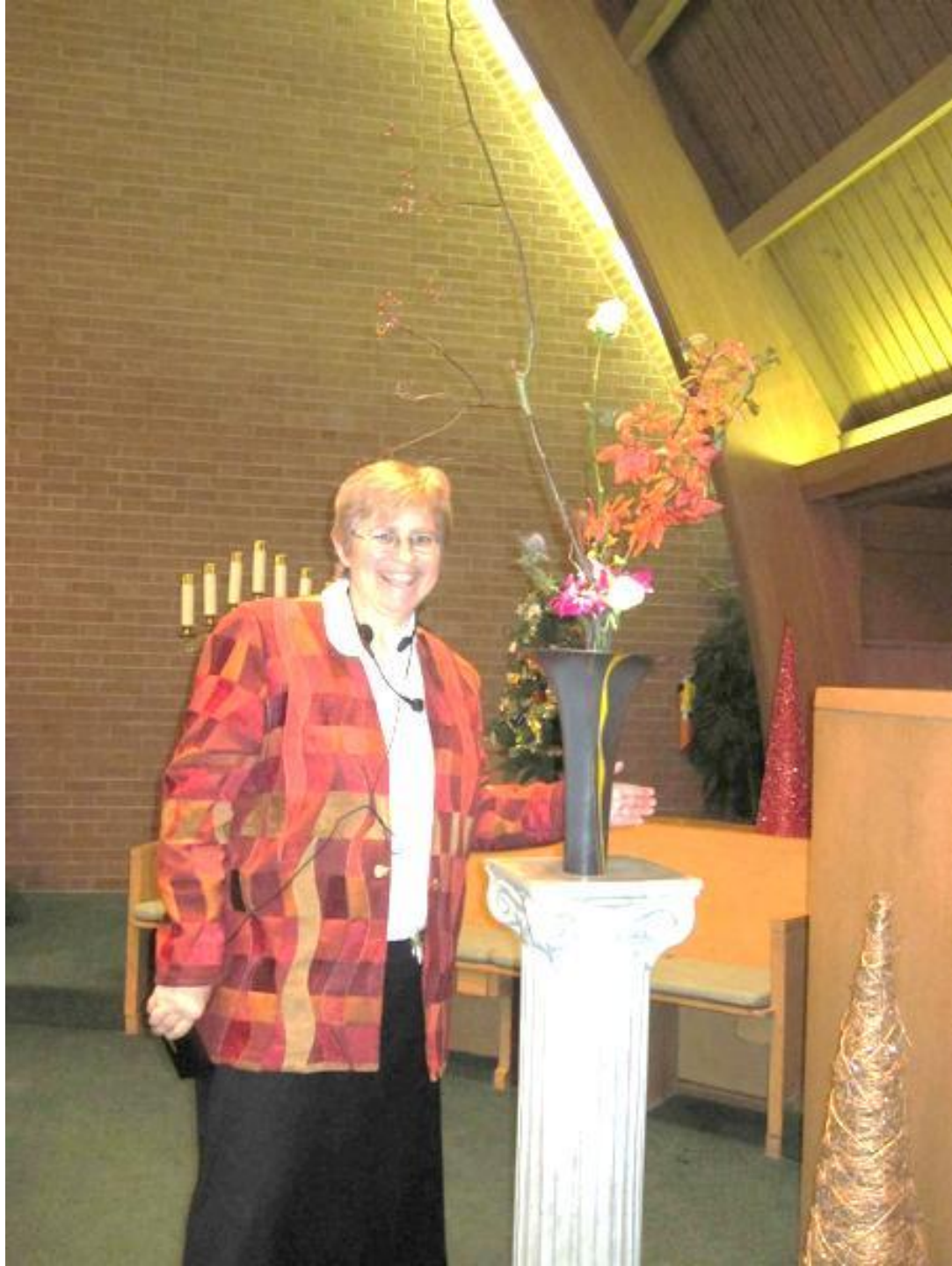
In Celebration  
of Our  
Amalgamation









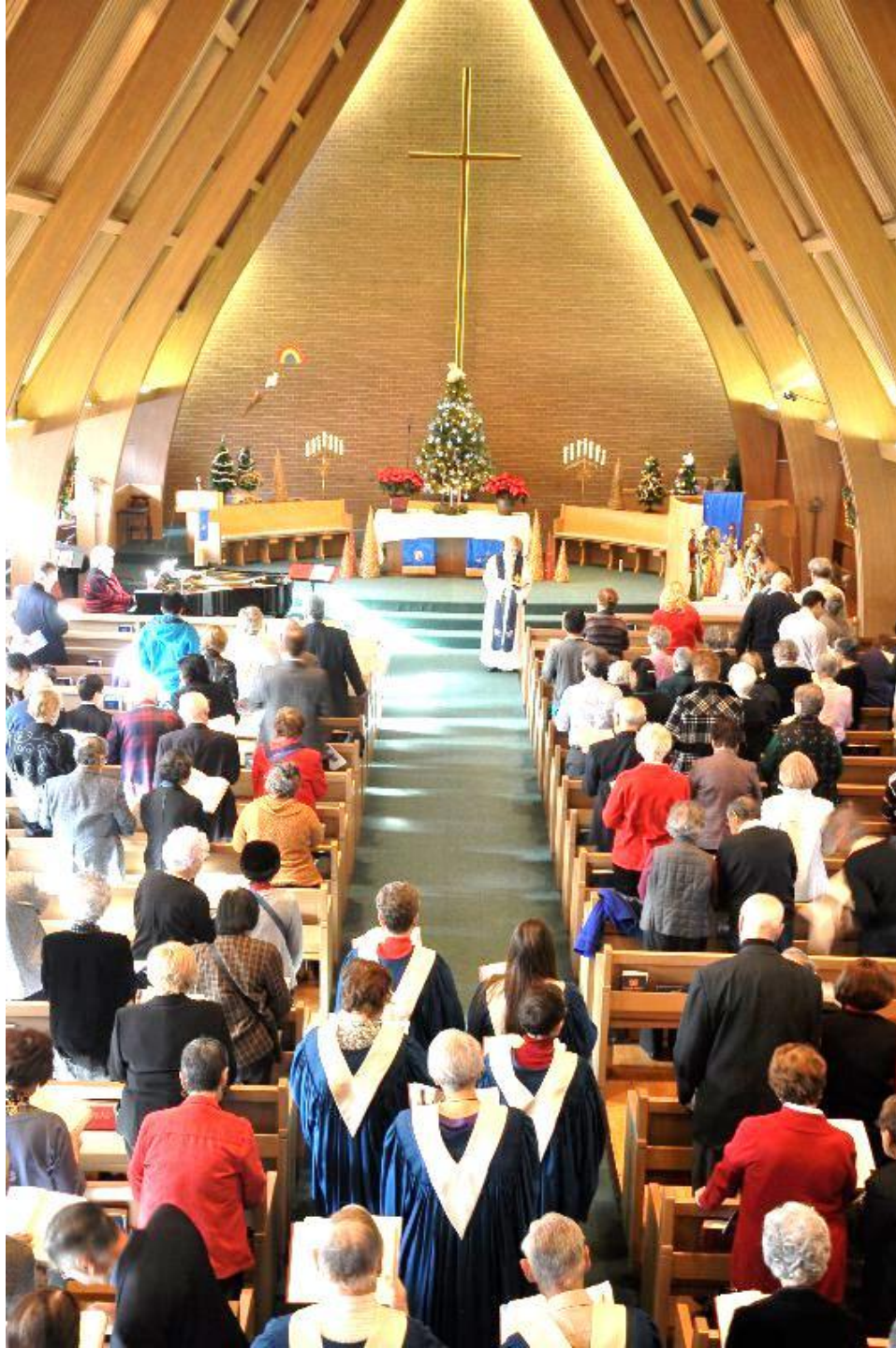






































































































































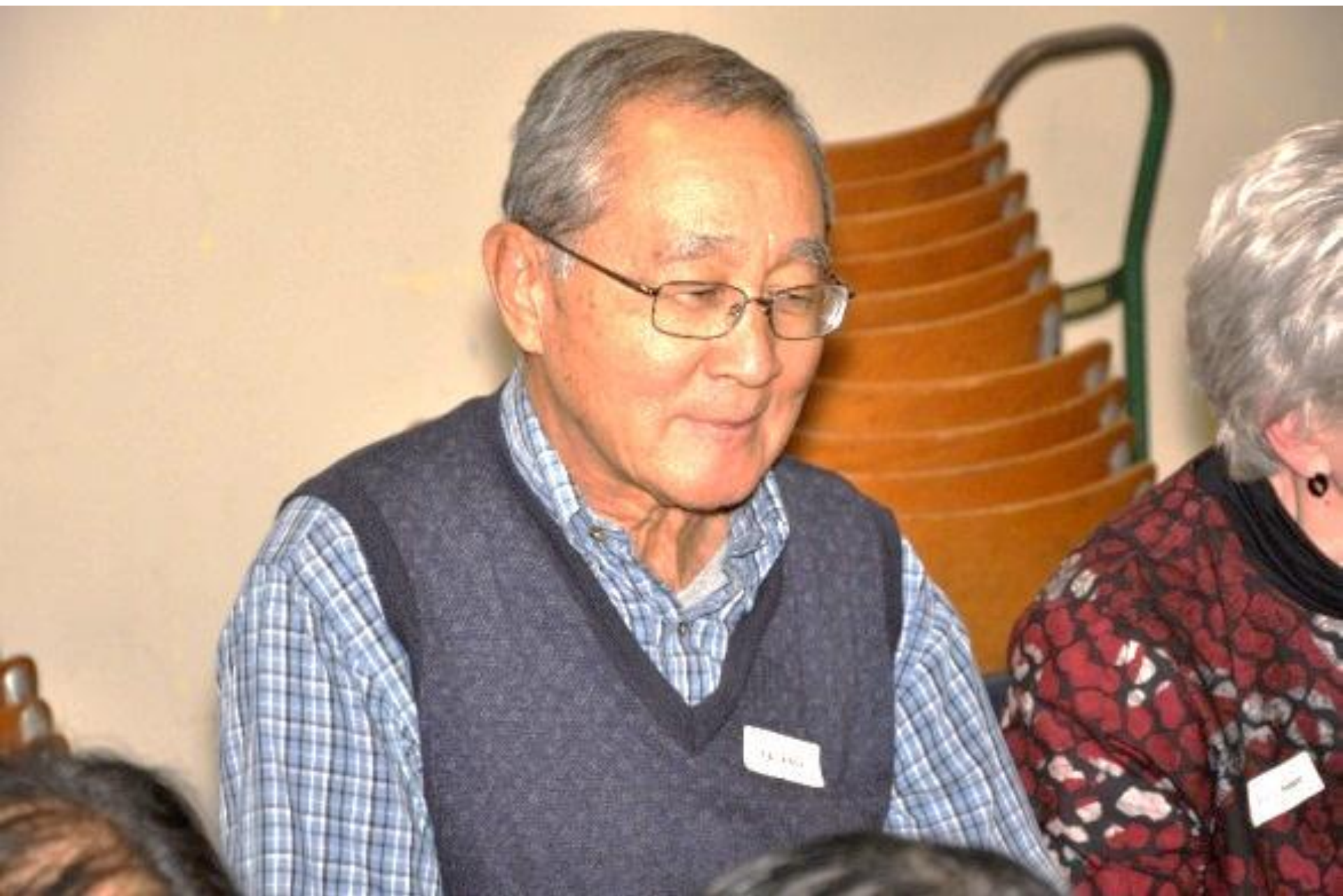






























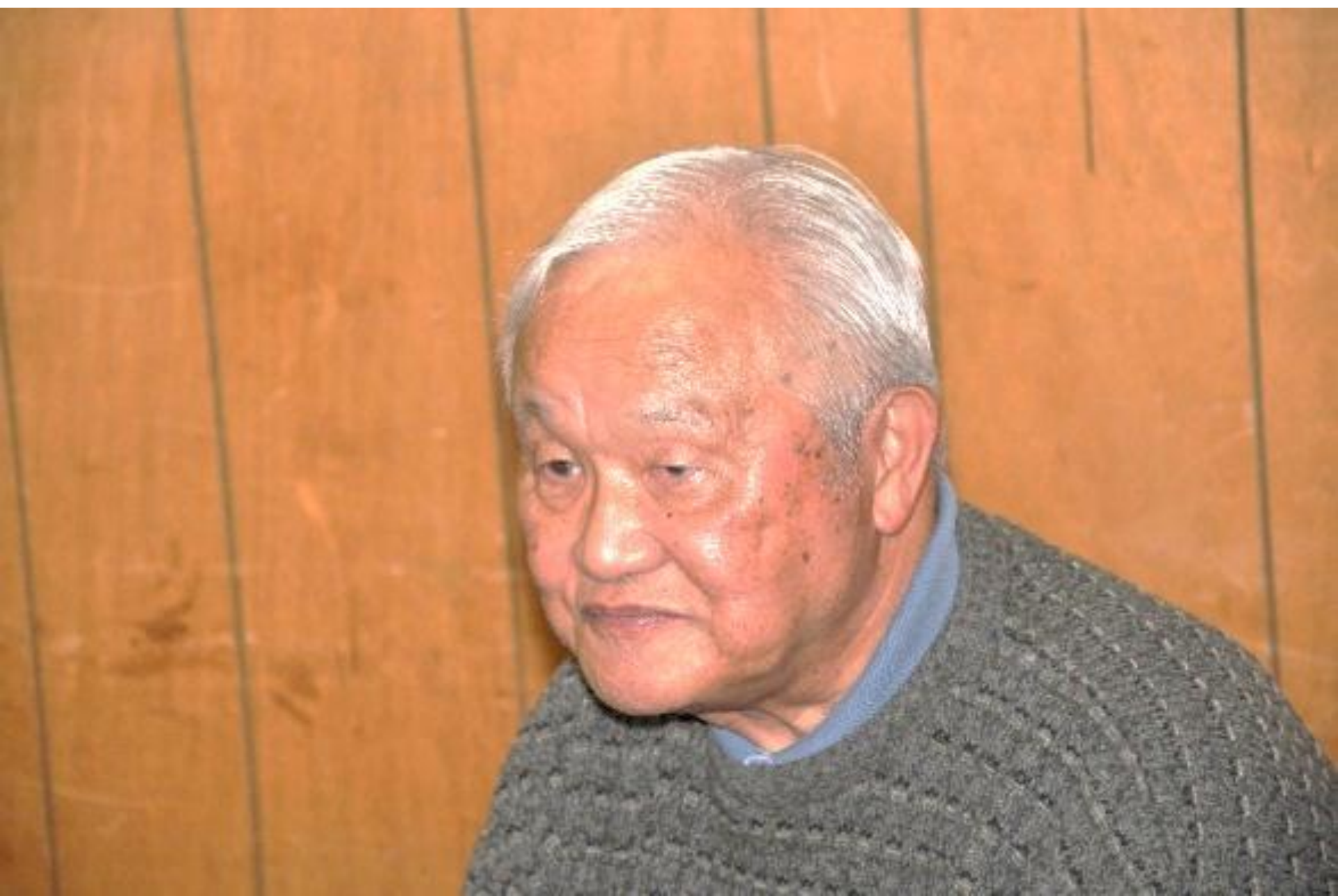














































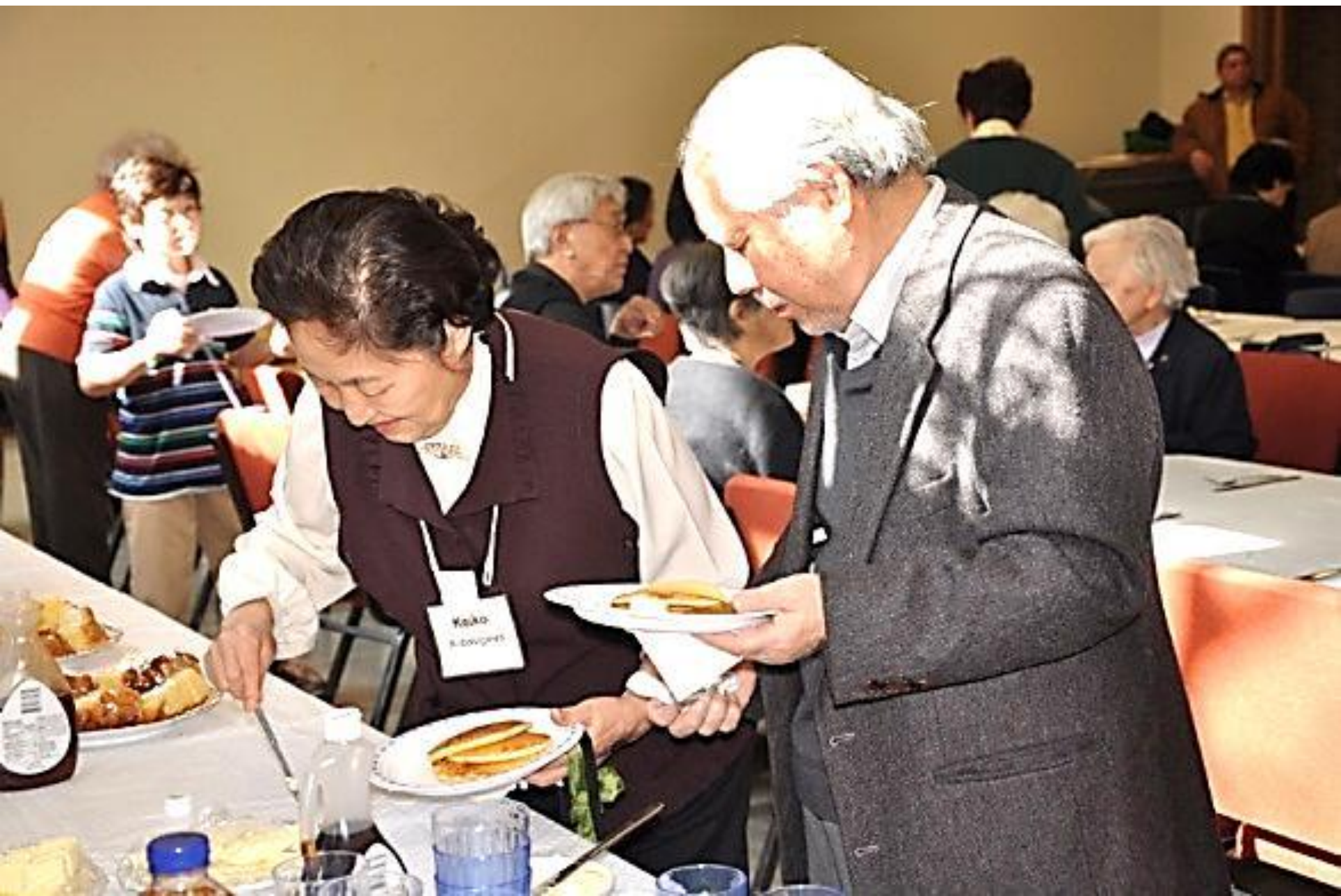
































































13	17	26	41	56
8	23	38	53	68
5	20	34	50	65

1	16	31	46
4	19	39	49
FREE	48	64	





**BINGO**

12	26	35	08	67
15	29	31	59	71
13	28	33	50	65
11	30	41	58	73
14	27	45	57	74

**BINGO**

12	26	35	08	67
15	29	31	59	71
13	28	33	50	65
11	30	41	58	73
14	27	45	57	74

Red, blue, and green bingo markers are scattered on the table in front of the card.



































Cathy

Daisy Mak



STORAGE































# Automated External Defibrillation

## "Chain of Survival"



Early  
Access

Early  
CPR

Early  
Defib

Early  
ACLS

Post  
Arrest  
Care





04/30/2011

















到·A册·U函证·G④④④④·S函证押函证











01/29/2012



...  
Standing before us, making us strong  
Lending their wisdom to help us along  
Sharing a vision, sharing a dream,  
Teaching our thoughts,  
Touching our lives,  
... as a deep flowing stream



02/12/2012





02/19/2012





# A Time with the Young People



02/26/2012





03/18/2012





Dorothy  
Friend

03/18/2012





04/01/2012





04/01/2012





04/15/2012



Glenn Genge, Darryl  
Harry Agar, Sarah  
David Gaskin, Br



05/27/2012





05/27/2012

and New  
Bible



Give us this day our daily bread  
Forgive us our trespasses  
As we forgive them who trespass against us  
Forgive us our trespasses



05/27/2012







11/11/2012









Ruby  
SHIKATA





秋·正

正·秋













